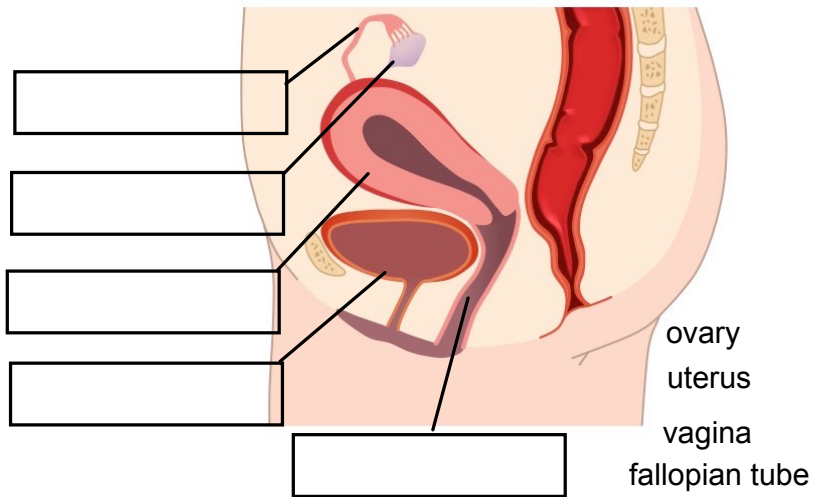
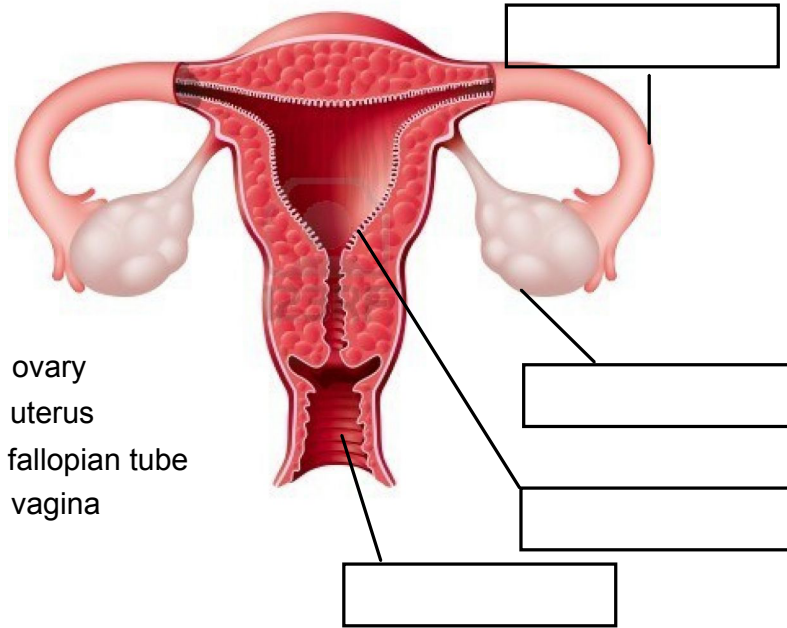


LT: I can identify structures and explain functions of the male and female reproductive system.



Passage leading to the uterus

**uterus** protected by a muscular opening called the cervix **vagina**

fertilized egg will implant and develop (becoming an embryo) egg production  
AKA oviduct oocytes mature

transports the oocyte to the uterus  
cells undergo meiotic division to form an ovum.

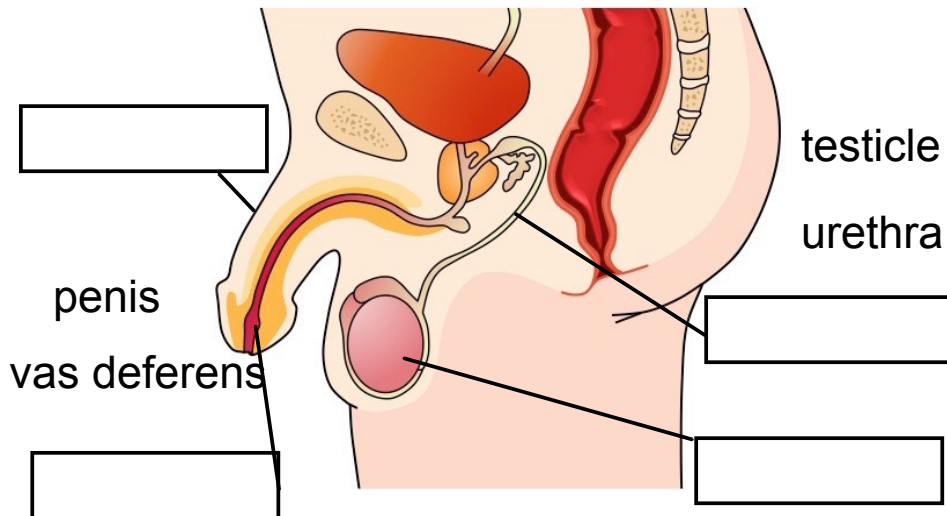
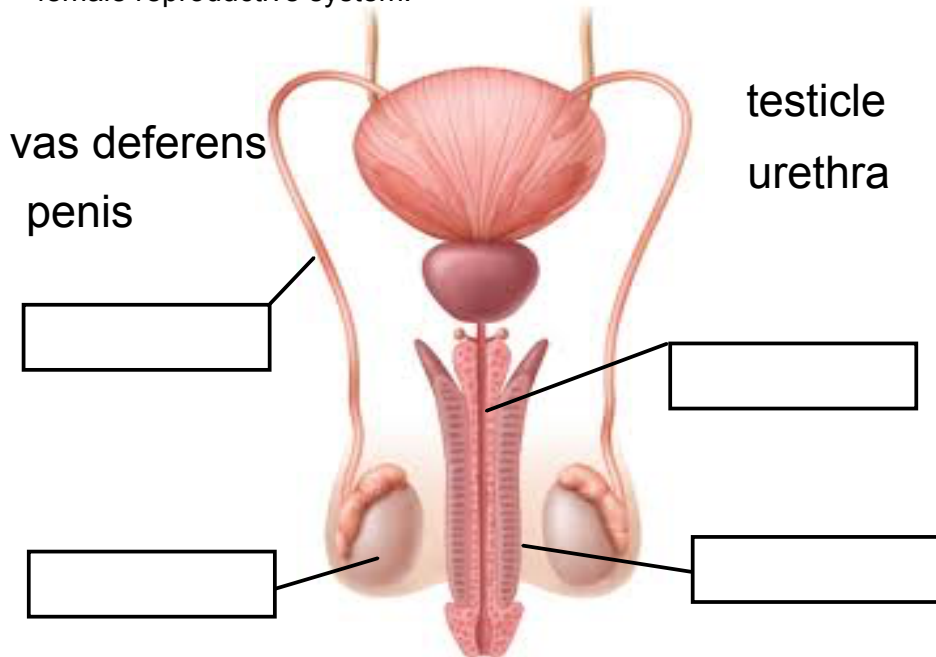
where fertilization typically occurs

**ovary** :release of ova gamete production **fallopian tube**

can become a thick and spongy 'nest' in preparation for a possible pregnancy. ovulation

estrogen secretion

LT: I can identify structures and explain functions of the male and female reproductive system.



**vas deferens**

Long tube which conducts sperm from the testes

testosterone production

conduit for sperm to exit  
urine released

delivers sperm into female body

gamete production

sperm produced

**penis**

**testicle**

**urethra**